

CERTIFIED RECORD OF LAND CORNER MONUMENTATION

History of original corner establishment:  
New corner:

\*

DIAGRAM  
T10S R32E  
NS1/64  
S111S12

Description of corner evidence found:

Description of monument and accessories I establish to perpetuate the original location of this corner:

Set a 2 1/2 x 30" aluminum monument 22" in the ground in a mound of stone.

T10S R32E  
NS1/64  
S111S12  
PLS1918  
1989

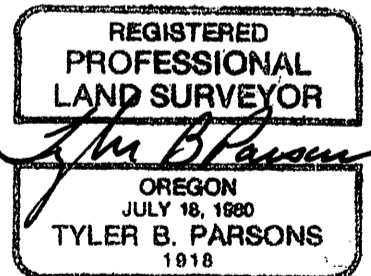
A 1 1/2" aluminum cap on 5/8" rebar bears S28°25'E 11.78 ft, marked RM S12 11.78 PLS1918.

A 1 1/2" aluminum cap on 5/8" rebar bears N 37°59'W 11.24 ft, marked RM S11 11.24 PLS1918.

New BTs have 3/4" brass washers marked PLS1918 attached to the BT blaze, faces and bands painted with red tree marking paint, and BT tags and Land Survey Monument signs. A steel fence post with Land Survey Monument sign is driven approximately 3-5 feet from the corner.

Sun Cadastral Survey, 53-04H1-7-4011  
Project No. 8722LC  
Field Book: 8-23  
Work Accomplished: 9/7/89  
Witnesses: Louise Parsons

PARSONS SURVEYING  
1915 S.E. Stone Street  
Corvallis, OR 97333  
(503) 752-7515



Office of County Surveyor County of GRANT  
State of OREGON, I hereby certify that the within instrument was filed in this office  
for record on the 21 day of NOV, 19 89

Robert D. Dwyer by \_\_\_\_\_  
(COUNTY OFFICIAL) (DEPUTY)